



01010010010111010101000101000101110101001010011101010001001010010111010010100111110100101001011101001010010101010110
010001001010111001010010100101001011101010000100101001010000101011101001001010010100111010010101001000110100111
0101011101011101010110101010010010101001001010101000101001101001001010100100101010010101001010100101001

CD Install Guide

Congratulations!

You are on your way to a simpler, easier way to manage your network. This guide shows you how to convert an ordinary PC into an Untangle Server using an Untangle Install CD.

What does the Untangle Server do?



The Untangle Server gives you a simple way to protect, control, and monitor your computer network. It delivers the technology you need to protect from threats such as viruses, spyware, and attacks. It protects productivity by controlling illegitimate web surfing, and gives an in depth view of network activity. All this in a single usable interface.



Reports provides clear, concise reports about network traffic and policy violations. With this information you can spot problems related to viruses or spyware and also monitor illegitimate user behavior, such as web surfing or instant messaging.



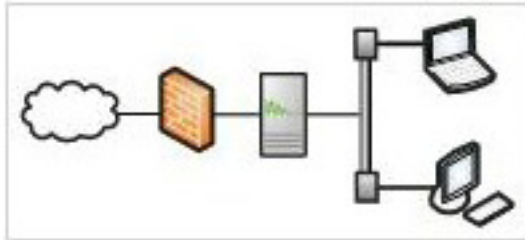
The Untangle Server runs on a PC located between your Internet connection (cable/DSL modem, etc.) and your computer network switch. It can either replace or complement an existing Router or Firewall.

Hardware Requirements

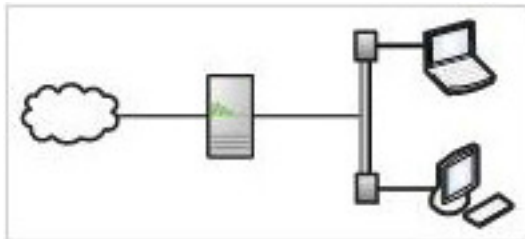
Resource	Minimum	Recommended	Note:
CPU:	1.0 GHz	2.0+ GHz	You must have a bootable CD/DVD drive installed in order to install Untangle server on your computer.
Memory:	512 MB	1-2 GB	
Hard Drive:	20 GB	40+ GB	
Network Cards:	2	3+ (for DMZ)	

Step 1. Connect your Server

Connect the Untangle server in your network as you intend to use it, doing this now will assist in later stages of the installation. The following diagrams show the two most commonly used methods. If need to get your Untangle server prepared off-line first, make sure that the Untangle server has internet access. You will be able to connect it as intended later.



If you already have a router/firewall and want to keep it installed, install the Untangle server between the firewall and your main internal switch. In this scenario, the Untangle server will function as a bridge. You do not need to change the default route (gateway) on any computers behind the firewall, nor change the routes on your router.

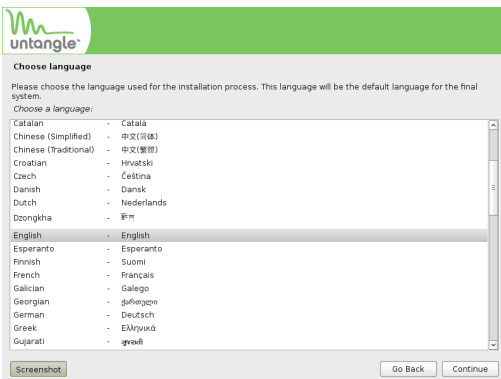


If you do not have an existing router OR you want to replace your existing router, connect the Untangle server as shown here. It will provide routing services for your network as well as firewall protection.

Step 2. The CD Installation Wizard

This series of steps will install Untangle and its operating system on your computer. Connect a monitor, keyboard and mouse to your PC. If you use a keyboard/monitor switch, do not switch away during installation and configuration, steps 1 through 4.

WARNING: This will erase all data on the hard disk that you choose.



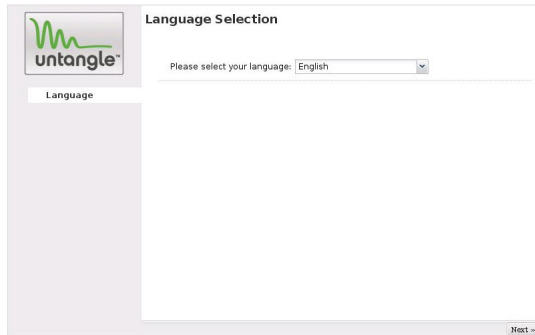
INSTALLATION STEPS:

- 1) Begin by starting your computer with the Untangle Install CD inserted.
- 2) If after a couple minutes you do not see the Choose Language screen, you may need to instruct your computer to boot from the CD drive.*
- 3) Follow the steps in the wizard.
- 4) When the Installation is complete, the system will reboot. Remember to remove the CD. You are ready to begin configuring Untangle.

* You may need to edit the BIOS to set the boot order to be CD/DVD drive first

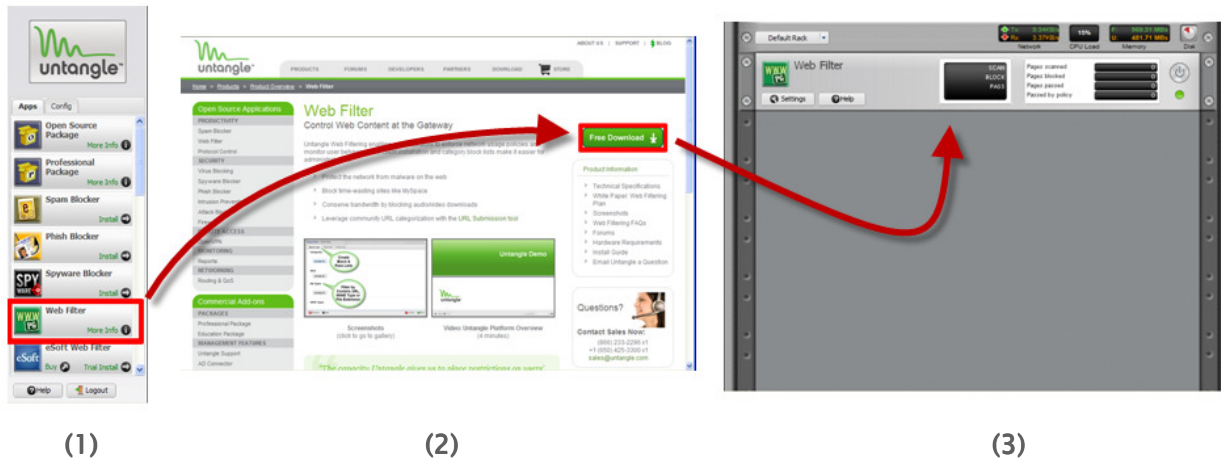
Step 3. Basic Untangle Server Configuration

When the system is done rebooting, it will automatically start the wizard to help you configure Untangle for use in your network.



Follow the steps in the wizard.

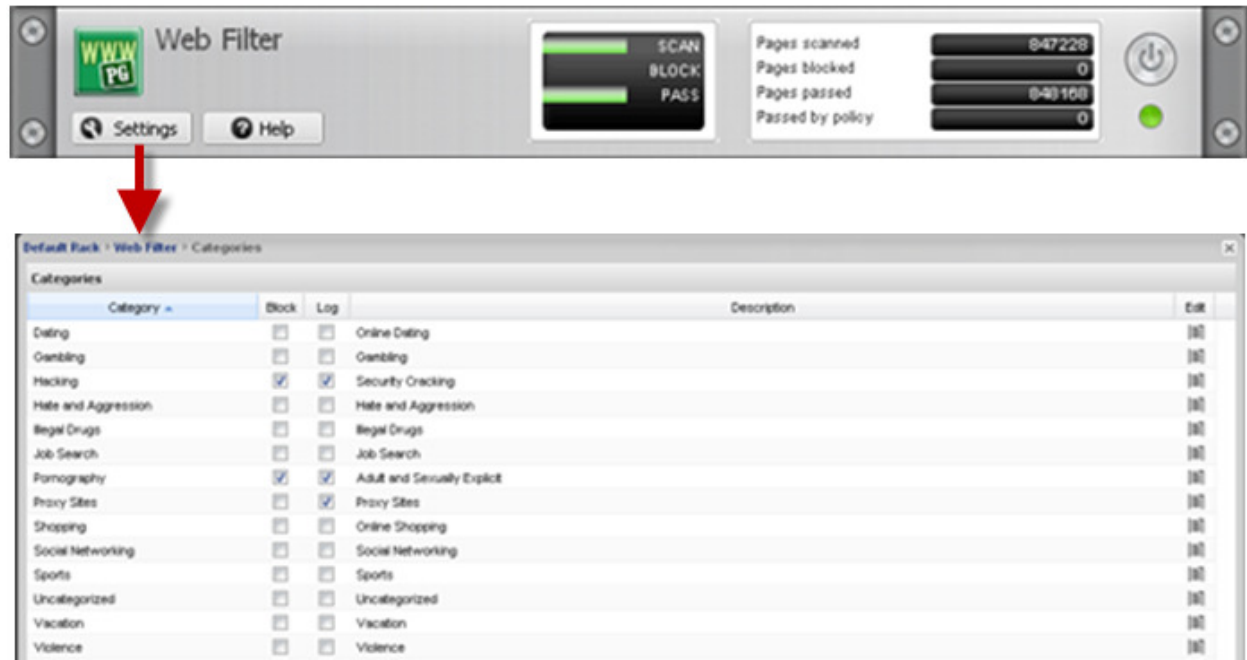
Step 4. Downloading Applications



You have successfully installed Untangle on your computer and configured the networking. Now you are ready to download applications. If you are not sure press the **What Apps should I use?** button and the Application Wizard will help you. If you know what you want to install, do the following:

- ◆ Click on the Application you would like to download. (step 1).
- ◆ Click “Free Download”, “Free Trial” or “Buy Now”, depending on what you would like to do and what options are available (step 2). Premium applications are available on a 14-day free trial.
- ◆ The Application will appear in your rack after it has been downloaded (step 3).

Step 5. Configuring Applications



Almost all Untangle applications automatically install and run (as seen by the green “on” light). If you want to change the default Settings, click on the **Settings** button to expose customizable settings. After making changes, click **Save** to accept your changes. Click **Cancel** if you don't want to save your changes. Use the “Power” button to deactivate or reactivate the application. Use the “Remove” button to remove an application from your rack if you no longer need it.

Technical Assistance

We are happy to help! For technical assistance with installation, setup, and operation of your Untangle Server:

- ◆ Online Support: <http://www.untangle.com/support>
- ◆ Online User Manual: <http://wiki.untangle.com>
- ◆ Untangle Community Forums: <http://forums.untangle.com>

Paid subscribers can receive live assistance. See our support website for more details.

How can I get an Untangle Install CD?

You can download a free Untangle Install CD at <http://www.untangle.com/download>, then burn it using CD burning software (such as Nero or CD Burner XP). **Note:** This is an ISO image. To burn an install CD from an ISO image, refer to your CD burning software documentation.