



ETM Dashboard

Centralized network orchestration

ETM Dashboard was designed to simplify the lives of administrators who need to manage multiple networks effectively and efficiently. As a cloud service, ETM Dashboard updates are seamless and automatic, providing immediate access to the latest improvements. Real-time firewall, router and endpoint status alerts help with site management and maintaining regulatory compliance.

Why ETM Dashboard?

Network Security Orchestration

- As part of Edge Threat Management, ETM Dashboard gives you visibility over the whole network and across all NG Firewall and Micro Edge deployments. All NG Firewall and Micro Edge appliances can be managed remotely from a single login. ETM Dashboard is ideal for organizations with multiple locations to deploy, protect and manage.

Simplified Management

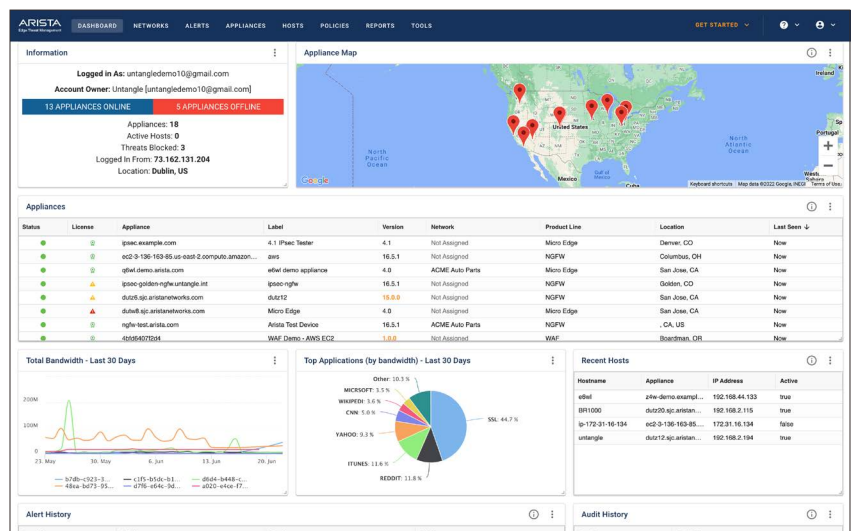
Reduce management overhead by handling a range of tasks remotely with ETM Dashboard. It's easy to make one-to-many policy changes across locations, then keep appliances in sync automatically. See appliance status at a glance, including uptime, bandwidth utilization, and network traffic summaries. Get valuable auditing logs detailing administrative changes, key to regulatory compliance. Manage licensing, software updates, backups and more.

Zero Touch Provisioning

Easily configure appliances remotely. Customers or partners with multiple locations and limited IT staff can simply set up the appliance to fit the needs of each location without the need for physical access.

Endpoint Security

ETM Dashboard's integration with Bitdefender, Malwarebytes and Webroot provides administrators an easy way to see not only the status of remote firewalls, but also manage devices on the network. Drill down into detailed information about hosts, get alerts when threats are detected, or even initiate an endpoint protection scan.



Advanced Security

- Protection, encryption, control & visibility anywhere
- NG Firewall, IPS, VPN & more
- Onboard security for small network appliances & IoT devices
- Full security processing on-premises or in the cloud

Intelligent Edge Optimization

- Secure, WAN-optimized connectivity for every location
- Seamless scalability
- Optimal predictive routing technology
- Manage one or many appliances from ETM Dashboard

Cloud Management at Scale

- Zero touch deployment
- Configure & push policies
- Advanced alerting & reporting
- Visibility across globally dispersed networks & endpoints

Edge Threat Management

Bring Cloud-managed Security & Connectivity to the Network Edge

The way we work is evolving. Businesses have adapted to new cloud-based technologies and applications that have increased employee efficiency and provided a scalable pathway to continued business growth. Work teams, now comprised of employees working in headquarter offices, remotely, or branch offices, have become spread across increasingly large distances. While businesses realize a range of important benefits in this transformative era, managing these dispersed networks and their connected devices can bring new challenges of cost, complexity, and control.



ETM Dashboard

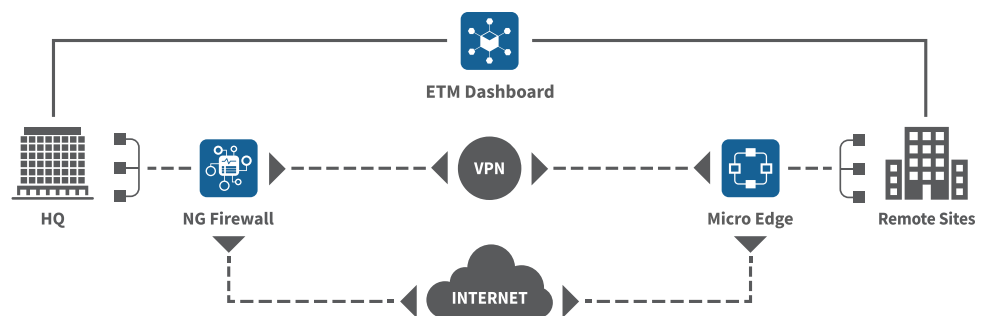


NG Firewall



Micro Edge

Edge Threat Management, consisting of our award-winning NG Firewall, Micro Edge, and centralized management platform, ETM Dashboard, is a comprehensive approach to network security orchestration. This framework offers a suite of cloud-managed security and connectivity options that work together to fit the needs of small-to-medium businesses and distributed enterprises. This integrated approach provides IT teams with the ability to ensure protection, monitoring and control across devices, applications, and events, enforcing a consistent security posture over the entire digital attack surface. Edge Threat Management puts IT back in control of dispersed networks, hybrid cloud environments, and IoT and mobile devices.



Managed Service Providers

Use ETM Dashboard to seamlessly manage multiple NG Firewall and Micro Edge deployments remotely through a single pane of glass for simplified security orchestration.

Contact our sales team to learn more about how Arista Edge Threat Management can benefit your organization.

Benefits

ETM Dashboard gives you total control across all of your NG Firewall and Micro Edge deployments. You'll get a comprehensive toolkit that puts you in the driver's seat. And because ETM Dashboard is a turnkey, cloud-based service, you can get access immediately—without the hassle of an expensive, complex and cumbersome hardware solution.

- Flexibly manage hundreds of sites—or just a few
- Simplify provisioning and licensing

Contact our sales team to learn more about how ETM Dashboard can benefit your organization.

ETM Dashboard Features

ETM Dashboard provides you both a Dashboard and an Appliances view of your NG Firewall and Micro Edge deployments. Use the Dashboard to see the health and wellness of your sites at a glance, then dig into the management of your instances under the Appliances tab.

Dashboard

ETM Dashboard gives you an immediate picture of what's happening on your networks. See the status of your NG Firewall and Micro Edge sites all in one place.

Deployments at a Glance

Quickly and easily view the status of your deployments, including:

- System Status
- Number of Active appliances
- Number of Hosts Managed

You'll also see a map of your deployments by location.

Account Auditing

Keep tabs on who's accessing your administrative functions with helpful auditing – crucial for compliance.

- Logins by user, location and time
- Appliance registrations
- Changes to account info
- Purchases

You'll also see a map of your deployments by location.

Dashboard Alerts

Get a view into historical, aggregated alert data so that you can keep your finger on the pulse of the networks you manage.

Threats

Gain insights into your attack surface with an aggregated threat history.

Policies

You can configure policies across NG Firewall deployments from the Policies tab. It's easy to view policies by appliance, then clone and push those policies to any other appliance. This "configure once, deploy anywhere" capability radically reduces management overhead thanks to ETM Dashboard's unique position as a cloud product.

- Store and retrieve app configurations from your appliance deployments.
- Deploy app configurations for alerts, services, and policies.

Appliances

ETM Dashboard also enables you to dig into what's happening on each individual instance of NG Firewall and Micro Edge with centralized management capabilities.

Deployment Status

See critical info about each of your NG Firewall and Micro Edge instances, including:

- System Status and Uptime information
- Number of Active Hosts
- Software Version Information
- Hardware Information (Platform Architecture, Available Resources)
- Network Information

Manage Deployments

You can centrally manage key functions from ETM Dashboard, including:

- Remove appliance
- Perform remote Software Updates
- Drill in to remote-manage each appliance through a secure SSH tunnel that only persists while you are logged in to that appliance
- Manage backups from each appliance

Alerts by Appliance

View a detailed alert history for NG Firewall appliances.

Threats by Appliance

View a detailed threat history for NG Firewall appliances.

Network Orchestration

Network orchestration in ETM Dashboard allows you to define, monitor and manage networks with multiple appliances.

- Group NG Firewall and Micro Edge appliances in a network.
- View aggregated performance data including average latency, jitter, and packet loss.
- Create and push shared WAN Rules across all your Micro Edge appliances.

Alerts

Administrators can create global alerts across deployments, improving visibility, ensuring business continuity, and easing management for multi-site deployments and MSPs.

- Better visibility to uptime issues by ensuring alert deliverability in the event of an outage or WAN failure.
- Supports integrations with popular management tools including Pager Duty and Slack.

Account

Customers can manage licensing, provisioning and billing across their account. The Account tab in ETM Dashboard also supports user roles for creating administrative accounts and associated privileges across multiple deployments.

- Manage subscriptions and appliances, as well as billing information.
- Divide responsibilities for administering specific deployments across different user accounts.

Reports

The Reports tab provides aggregated reports of all NG Firewall deployments within ETM Dashboard.

- Provides 30 day aggregated reporting of every appliance via a single location.
- Reports include: Audit History, Bandwidth Control: Top Applications (by bandwidth), Events: Alerts Received, Events: Notification Log, Top Hostnames (by bandwidth), Total Bandwidth, Web Filter: Top Domains (by request).

Mobile App

Use the app on your mobile device to see the status of your network and managed appliances in an instant. Gain peace of mind that the appliances on your network are online and running smoothly when you are away from your office computer.



Santa Clara—Corporate Headquarters
5453 Great America Parkway,
Santa Clara, CA 95054

Phone: +1-866-233-2296
Email: edge.sales@arista.com



Copyright © 2022 Arista Networks, Inc. All rights reserved. CloudVision, and EOS are registered trademarks and Arista Networks is a trademark of Arista Networks, Inc. All other company names are trademarks of their respective holders. Information in this document is subject to change without notice. Certain features may not yet be available. Arista Networks, Inc. assumes no responsibility for any errors that may appear in this document. August 3, 2022